

# PORTFOLIO

## LAND BASED TRAINING LIMITED



*Akoranga O Te Whenua  
Improving Your Skills and Knowledge*

*Updated: May 2005*

# CONTENTS

---

Mission Statement	Page 3
Goals / Aims	Page 3
Who is Land Based Training Limited?	Page 4
Organisation Structure	Page 6
Courses / National Certificates Available	Page 7
School Programmes	Page 11
Land Based Training Staff	Page 13
Staff Expertise	Page 14
- Management	
- Tutors	
- Field Officers	
Joint Venture	Page 16
Contacts List	Page 18
<u>Enclosures</u>	
NZQA Accreditation	

## **MISSION STATEMENT**

---

***TO PROVIDE A PATHWAY TO KNOWLEDGE AND SELF AWARENESS THAT  
WILL LEAD TO BETTER EMPLOYMENT OPPORTUNITIES  
THROUGH WORK BASED TRAINING***

## **GOALS / AIMS**

---

To provide well-structured training programmes to allow trainees to confidently recognize their own direction.

### 1.2 Aim of Goals and Objectives

*To provide well-structured training programmes and to allow trainees to confidently recognise their own direction.*

- 1.3 Our goal is to give our trainees the opportunity to experience an environment that is conducive to their individual learning styles.
- 1.4 Our goal is to take the trainees through our courses to enable them to secure unit standards leading to recognised qualifications.
- 1.5 We will aim to develop personal growth of the trainees and this will be encouraged at all times throughout the training programme.
- 1.6 Our goal is to develop leadership within students and also to assist them to develop skills for working as a team and as individuals.
- 1.7 We will aim to structure our organisation allowing us to help students identify their needs and assist them in their career goals.
- 1.8 Our goal is to give our students skills that will enhance employment opportunities.
- 1.9 Our objective as a Tertiary Education Organisation (TEO) is to offer our stakeholders the opportunity to have input into our courses to ensure their individual needs are being met and quality is being maintained.
- 1.10 Our goal is to be the preferred supplier of agricultural and contracting training in the North Island

## **WHO IS LAND BASED TRAINING?**

---

Land Based Training Limited was incorporated on the 9<sup>th</sup> day of December 1996.

Land Based Training Limited is an innovative Tertiary Education Provider with its head office based in Wanganui and branching out with courses and facilities throughout the North Island of New Zealand.

Land Based Training presently operate a number of full time Tertiary Education Commission (TEC) funded courses teaching the National Certificate in Agriculture Level Two, Introduction to the National Certificate in Employment Skills, National Certificate in Civil Construction Works and Introduction to Horticulture.

We also cater for a large number of schools throughout the North Island where we operate courses in Agriculture, Forestry and Construction. These STAR and Gateway courses range from short block courses to full programmes on behalf of High Schools. The courses are a huge success encouraging people into primary industries as well as increasing the curriculum offered at schools.

Land Based Training Limited is Nationally Accredited to teach New Zealand Qualifications Authority unit standards of learning in agriculture up to and including Level 5, three Level 6 units, a range of horticultural units and also units in the sub-field Civil Plant Operation and Management, Civil Works and Services, Highway Construction and Maintenance and Occupational Health and Safety.

We have recently gained accreditation from NZQA for the following units – Domain Fellmongery Processing up to and including Level 3, Domian Hide Processing up to and including Level 3, Meat Industry – further processing up to and including Level 3, Meat Industry – generic up to and including Level 3, Meat Inspection – generic up to and including Level 3, Slaughter and Dressing up to and including Level 2.

Land Based Training Limited are registered GROWSAFE tutors.

Our focus is to build a closer relationship to promote successful career options within the agricultural industry.

By enrolling on a course with Land Based Training a person can make further choices of where their future may eventuate, learning and developing the required skills as their career develops.

Within the Construction industry our aim is to give recognition of prior learning to people already in the industry as well as introducing new people with a good skill level.

Our company and staff take pride on their versatility to produce a vast selection of course modules to accommodate learning needs of full time farmers, including fencing, feed budgeting, staff and employment contracts and others.

Due to Land Based Training's success in agriculture we were also contracted by TEC to teach General Work Based Training in Wanganui, Rangitikei and Palmerston North.

All of our trainee's needs are being met by being able to operate interesting and challenging courses for people in the wider agricultural and now business community to improve themselves.

One example of the success of the courses is measured in the recent course finishing in the Hawkes Bay where 100% of the people achieved positive outcomes and the trainees upon that course achieved three times the credit achievement of the average for that region.

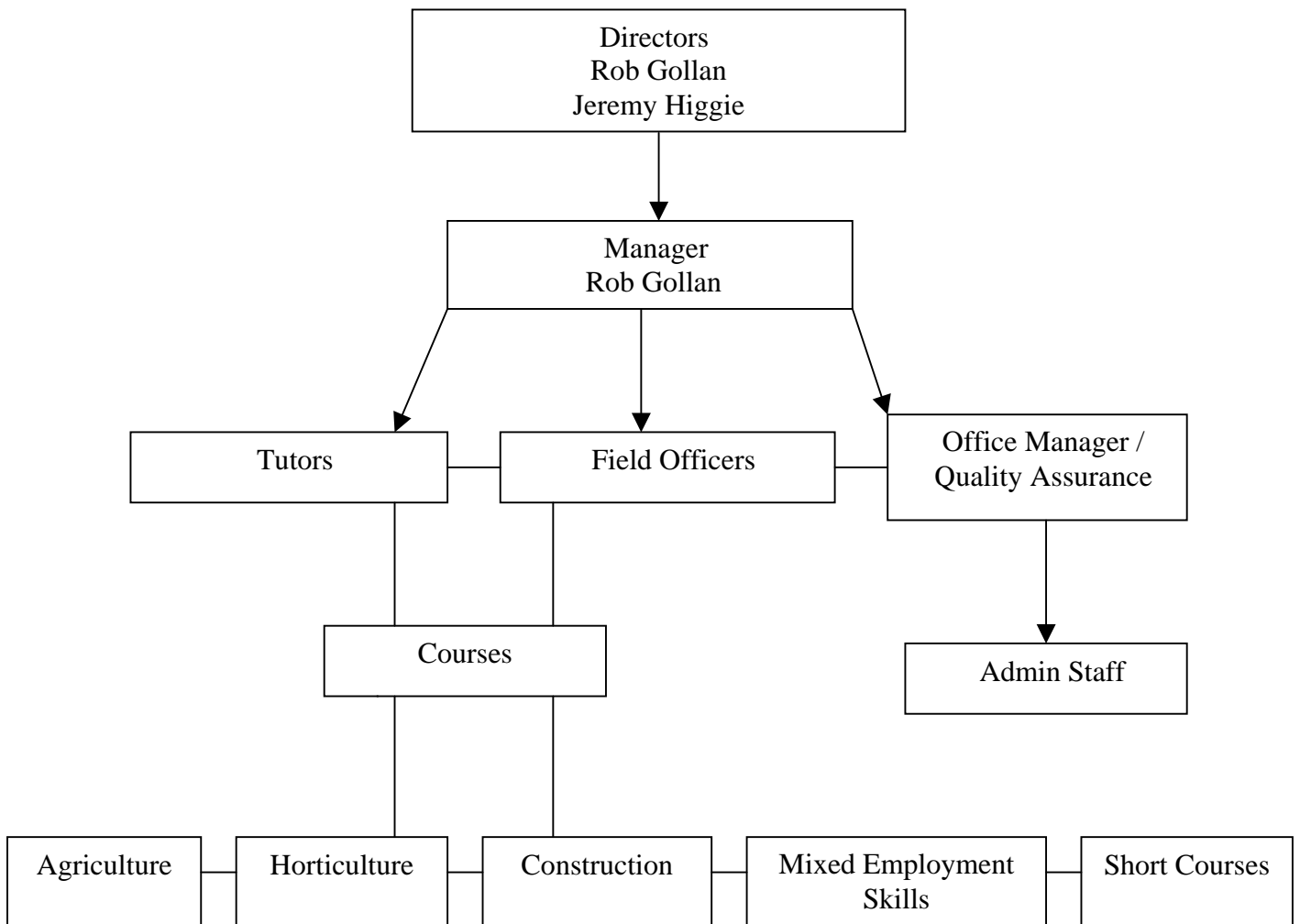
Land Based Training promotes itself as doing well with hard tasks. We are often approached for one off courses for WINZ, schools and private organisations.

In the recent past we have run homecare courses for the disabled for WINZ Palmerston North, cleaning courses for WINZ Wanganui and Palmerston North, Forestry, Earthworks for Taylor Contracting in Nelson, Spraying and chemical courses for Heb Contracting in Auckland. All were completed to a high standard and past the required outcomes.

Land Based Training is successful and the success is continuing to grow for both the company and the people associated with it.

# ORGANISATION STRUCTURE

---



# **COURSES / NATIONAL CERTIFICATES AVAILABLE**

---

## **NATIONAL CERTIFICATE IN AGRICULTURE LEVEL TWO**

NO COURSE FEES (*eligibility criteria*) - An introductory to farm skills, options include sheep / cattle and dairy. This is a 44-week course operating from Wanganui, Taranaki, Ruapheu, Manawatu, Horowhenua Hawkes Bay and Waikato. Trainees spend four days per week on farm and one day per week in class learning theory units. Trainees can enter this programme any time throughout the year.

## **HORTICULTURE CERTIFICATE**

NO COURSE FEES (*eligibility criteria*) - Trainees gain credits towards the National Certificate in Horticulture Level 2. This is a 44-week course operating from Patea Marae. Trainees spend their time on the Marae developing the gardens. Trainees can enter this programme any time throughout the year.

## **EMPLOYMENT SKILLS CERTIFICATE**

NO COURSE FEES (*eligibility criteria*) - Courses are currently in Wanganui, Rangitikei and Palmerston North, with trainees achieving credits towards the National Certificate in Employment Skills and gaining 'real life skills' with four days per week work experience and one day spent in the class learning theory units. Trainees can enter this programme any time throughout the year.

## **NATIONAL CERTIFICATE IN AGRICULTURE LEVEL FOUR**

This course is designed for employed agricultural workers who would like to upskill themselves and gain a recognised National Certificate. Course content includes: Pasture Management, Soils and Fertilisers, Farm Vehicles, Animal Breeding and Feeding, Animal Health

## **PRODUCTION MANAGEMENT**

This course is designed for employed agricultural workers who would like a career in Farm Management. Course content includes: Feed Budgeting and Management, Animal Health, Financial Management

## **NATIONAL DIPLOMA IN AGRI - BUSINESS MANAGEMENT LEVEL FIVE**

This course is designed for Farm Managers who would like to gain a recognised qualification and improve and understand their farm production. Course content includes: Investment and Risk Analysis, Physical Resource Management, Financial Management, Budget and Cash Flows, Taxation / GST, Economics and Marketing

## **GROWSAFE**

This course is for people who use agrichemical spray applicators and is a requirement under the OSH Health and Safety Act. Course content includes the safe use of agrichemicals (plant, pest and disease) for ALL users of chemicals. Two stages: GROWSAFE Standard Introductory Certificate, GROWSAFE Applied Certificate

## **BLOCK COURSES**

Short courses focusing on one topic, courses can included: Chainsaws, ATV's, Tractors, Stock Handling, Motorbikes, Fencing, Motivational and Job Search Skills.

These courses are designed for farm stations, business groups or individuals who would like to increase their skills and knowledge.

## **STAR'S COURSES**

Land Based Training currently run 30 week STAR courses in a number of Secondary Schools. Trainees learn basic farming skills and this allows them to go on to the National Certificate in Agriculture Level Two. Forestry and Civil Construction.

## **GATEWAY**

The Gateway scheme was developed by the Tertiary Education Commission (TEC) to enable senior secondary schools (Years 11 to 13) to participate in structured workplace learning. It assists schools to make learning relevant and to broaden students' options by offering them both traditional and work-place learning. Credits will be gained towards the NCEA.

## **NATIONAL CERTIFICATE IN CIVIL CONSTRUCTION WORKS (INTRO SKILLS)**

Introduction to civil construction students must have a basic understanding of materials, on site safety, small plant and equipment operation, read and interpret plans, setting out and compaction.

This is the basis of the Construction TEC course and units are adapted for the Construction based STARS / GATEWAY courses.

## **NATIONAL CERTIFICATE – CIVIL WORKS AND SERVICES (ROAD OPENING - TRENCHING) LEVEL 2**

This is the basic qualification for those people who work safely and co-operatively at road opening operations for service trenches. Students must have an understanding of digging up the road, identify the services and repair/reinstall services and backfill and compact the road. The optional strands represent knowledge and skills for safely and competently carrying out required work in trenches for the following services: electricity supply, gas distribution, and water services and aligns itself to HB2002: 2003 COP for Working in the Road and AUOG COP.

## **NATIONAL CERTIFICATE – CIVIL WORKS AND SERVICES (ROAD OPENING - SITE CO-ORDINATION) LEVEL 3**

This qualification is for those people who act as forepersons and leaders in the field of Road Opening who can notify public of operations, liaise with relevant parties, ensure safe temporary traffic management at the site, lead and supervise personnel, ensure legal standards are met and correct procedures, methods and materials are used, and be able to demonstrate practical skills relevant to road opening. This qualification shares some unit standards with the compulsory section of the National Certificate in Civil Works and Services (Road Opening - Trenching) with optional strands in Electricity Supply, Gas Distribution, and Water Services.

## **NATIONAL CERTIFICATE – ROAD CONSTRUCTION (LEVEL 3)**

This certificate is for those people who have a knowledge of road formation and drainage, are able to work safely at roadworks sites, install safety structures, dismantle services, use stabilisation techniques on roading materials, and use a power-driven rotary broom. This qualification leads to the National Certificate in Civil Construction Works (Foreperson) with optional strands in Kerb and Channel, Concreting, High Capacity Highways, and Roothing

### **NATIONAL CERTIFICATE – ROADING MAINTENANCE (LEVEL 3)**

This certificate recognises the knowledge and skills required by people working in the roading maintenance sector of the civil construction industry; working safely, install safety structures, use a power-driven rotary broom, maintain road pavements, verges, amenities and drainage systems, and trim and remove roadside vegetation. The elective unit standards enable recognition of a choice of skills related to road maintenance.

### **NATIONAL CERTIFICATE – CIVIL PLANT OPERATION (FORESTRY EARTHWORKS)**

This certificate recognises the skills required to operate civil plant in a forestry environment and is for those people who construct earthworks, roads and pipe culvert structures, respond to emergencies have knowledge of road formation within the forestry environment using at least one major and several smaller items of civil plant. This qualification shares some driver licence endorsement and civil plant operation unit standards with the National Certificate in Civil Plant Operation with strands in Skilled and Multi-skilled.

### **NATIONAL CERTIFICATE – CIVIL PLANT OPERATION AND MAINTENANCE (SKILLED & MULTI SKILLED)**

This certificate recognises the skills, knowledge, and attitudes required by operators of heavy plant on civil construction sites. Holders of this certificate are able to work safely at roadworks sites, use working drawings, locate services, and apply quality and material testing requirements. Holders of the skilled strand are able to operate at least two items of heavy plant for civil construction. Holders of the Multi-Skilled strand are able to drive special-type vehicles on wheels, rollers, and self-laying tracks.

### **TRANSIT NEW ZEALAND WORKING ON THE ROAD COURSES**

Temporary traffic management, risks and safety issues found in this environment require people to be trained to work on the Road Controlling Authorities roads. Land Based Training provides courses on Level Low Volume and Level 1 Roads (approx. 96 % of New Zealand roads). There are two levels of qualification: Basic Traffic Controller (TC) for people to set up a site unsupervised once briefed. Site Traffic Management Supervisor (STMS) for people who design and implement Traffic Management Plans, audit temporary traffic management and delegate the site to traffic controllers.

### **NATIONAL CERTIFICATE – OCCUPATIONAL HEALTH AND SAFETY (WORKPLACE SAFETY) (LEVEL 3)**

This qualification is designed to be flexible while accommodating a cross section of industry personnel by providing a base level of workplace health and safety competency and recognising specialist skills associated with a range of unique workplace safety and health issues. Unit standards from below level three are included as they provide foundational skills. Students undertaking this qualification would typically be new to the industry or be wishing to update their current skills and knowledge.

### **NATIONAL CERTIFICATE – OCCUPATIONAL HEALTH AND SAFETY (CO-ORDINATION) (LEVEL 4)**

This qualification is designed for all industries and has a flexible structure to meet different needs. It is intended for safety supervisors, co-ordinators or team leaders. The National Certificate in Occupational Health and Safety (Workplace Safety) (Level 3) or equivalent experience are pre-requisites and student should have a good grounding in safety specific practices within industry.

**NATIONAL CERTIFICATE IN CONSTRUCTION HEALTH AND SAFETY, AND  
INJURY PREVENTION WITH STRANDS IN ON SITE THEORY, ON SITE PRACTICE,  
AND ON SITE MANAGEMENT**

This qualification is designed for those people who are required for developing and implementing policies and procedures for safe practice and injury prevention in the construction environment. Due to the health and safety requirements of the sites in which these trade skills are applied, people that wish to undertake this qualification must demonstrate the capacity to understand any and all requirements, instructions, and communications (oral, written, and graphic), to the required industry level.

**HEALTH AND SAFETY REPRESENTATIVE CERTIFICATE SHORT COURSE**

# **SCHOOL PROGRAMMES**

---

Land Based Training Limited has a number of school programmes on offer.

## **Block Courses**

Block courses are to teach the students introductory skills on farm, to unit standard level.

Previous popular courses that other High Schools have had delivered:

Fencing	Hand piece skills
Shearing	Motorcycles
ATVs (4 wheelers)	Farm Health and Safety
Stock handling	Stock sale yard operations
Tractors	Agrichemicals

## **STAR Programmes**

A popular choice with schools where a group of students are taken out of the school each week for either a half or full day. This is an external programme where 100% of the course content is out of the school's grounds. There are some schools that have opted to have a classroom available and also allows some of the practical courses on the school grounds eg motorbikes. This creates a lot of interest right through the school.

Land Based Training require a minimum Number of students per course of 10. The suggested number is 12 students per tutor. This is to pay the minimum costs associated with successfully operating any of the courses that require a specialist Tutor as well as Administration that includes course preparation, site and location as well as the Unit Standard technicalities.

## **Land Based Training Responsibilities**

1. Supply an Industry based Tutor.
2. Deliver Unit Standard associated material and administer assessments.
3. Plan, book all sites and tool requirements.
4. Supply and support Moderation policy.

## **School Responsibilities**

1. Supply at least the minimum of students required.
2. Supply all Student Travel arrangement. This cost may be met by the school or added onto the overall fee.
3. Register all NZQA unit standards achieved and pay these costs.

## **Gateway**

Gateway has been designed to help schools meet the learning needs of all their students. It assists schools to make learning relevant and to broaden students' options by offering them both traditional and workplace learning.

It also enables schools to help their students by strengthening the range of career pathways into adult life and independence.

Students pursue individual learning programmes which allow them to gain new skills and knowledge in a workplace in their local community. The learning is hands-on and practical.

Schools are responsible for:

- Designing workplace learning programmes for students
- Overseeing the learning opportunities and assessment once they are set up
- Administering the programmes
- Liaising with participating employers and Industry Training Organisations

Schools can use a broker, such as an Industry Training Organisation, a community organisation or a polytechnic, to help them arrange the delivery of workplace training opportunities.

*Please refer to our Schools Package 2005, for further details*

# LAND BASED TRAINING STAFF

---

**Rob Gollan**  
*Director*

**Jeremy Higgle**  
*Director*

**Manager**  
*Rob Gollan*

Frances Barrie / Sharon Campbell  
Christina Ivar  
*Office Administrators*

---

## Field Officers

Paul Smith  
Brian Doughty  
*Wanganui Farming*

Jo Hazlitt  
*Palmerston North / Rangitikei*

Hikoi Te Riaki  
*Ruapehu Farming*

Ricki Tito  
*SthTaranaki Farming*

Raewyn Stratton  
*Horowhenua Farming*

John Bird / Marley Taukamo  
*Hawkes Bay Farming*

Dick Vroombout  
*Contracting*

Gerald White / Rod Thompson  
*Manawatu Farming*

Richard Haycock  
*Central Taranaki Farming*

Sarah Deroles  
*Wanganui Employment Skills*

Colin Ranford  
*New Plymouth Rural Industries*

Ngapari Nui  
*Patea Horticulture*

## Tutors

Derek Priest  
*Wanganui, Ruapehu, WITT - Farming*

Jason Richards  
*Hawkes Bay/ Schools – Farming / Hort*

Nicola Inwood  
*Waikato Area Manager / Tutor*

Jeremy Palmer  
*ERE / TC Refresher / STMS*

Ruth Short  
*Taranaki Farming/ Schools / WITT*

Mike Hansen – *WITT Taranaki*

Patricia Avison  
*Mixed Employment Skills / Literacy*

David Severinsen  
*Farming Manawatu / WITT*

Chris Drake - *Taranaki*

## **STAFF EXPERTISE**

---

Land Based Training Limited staff include Farm Consultants, practical farmers and full time tutors.

All staff have proven practical backgrounds in project management and business at a number of different levels in both the dairy, sheep / beef and agri-business industries. All of our trainees have an equal opportunity to succeed.

The wider coverage enables Land Based Training Limited to select the right person for the task, land use analysis, Farm Consultancy, farm set up and project development, stock management and breeding, teaching or tutoring.

Land Based Training Limited is able to meet the aims and objectives of clients by selectively utilising the knowledge it has available for best results.

### The Field Officers Role:

To oversee the training and education of students who are on the Land Based Training courses, with a positive committed attitude. To seek the best possible outcome for the students.

### Tutor's Role:

For all activities relating to off-job assessments

# **MANAGEMENT**

---

## **Rob Gollan**

Land Based Training Limited has been managed by Rob Gollan since it was formed in 1996.

Rob has an enormous history in agricultural starting out at Lincoln University and receiving a Bachelor of Agricultural Science.

Since then Rob has worked for MAF and then in 1987 formed his own Farm Consultancy Company here in Wanganui.

Rob Gollan Farm Consultancy employs four staff, three of which are involved with the administration for Land Based Training Ltd.

Rob is also involved in discussion groups, Owner/Director of Stocknet New Zealand, Developer and shareholder of Innovative Dairying Moutoa Ltd, Innovative Dairying Kairanga and Innovative Dairying Norsewood.

Rob contributes his time and experience in farming to the trainees with classroom and on farm visits. Rob's Management / Director skills are of the highest level as he continues to move Land Based Training forward and achieves a high level of commitment and respect from his staff.

## **Jeremy Higgle**

A former Field Officer, Jeremy Higgle is also the Director of the company.

Jeremy purchased his family sheep / beef farm of 1250 acres in 1987. Since then he has been in the agricultural training industry with courses such as R.E.A.P in conjunction with his own farm.

Jeremy also founded and become Director of Ag Challenge, which is another Agricultural Training Institute here in Wanganui.

Jeremy was Field Officer for his own courses in sheep and beef and not assists new staff become proficient.

## **Jeremy Palmer – Director Land Based Training Construction Limited**

Jeremy is the tutor for Health and Safety and Construction National Certificates and is responsible for the development and design of short courses using units from the qualifications that we provide.

He is a registered workplace assessor for the Contracting ITO (InfraTrain), Electrical Supply ITO and Gas and Petroleum ITO for Contracting and Traffic Management Unit standards and the New Zealand ITO and Building and Construction ITO for Health and Safety unit standards. He has a huge wealth of experience gained from being an Instructor at the School of Military Engineering and over 25 years as a civilian running his own contracting company and being a regional manager for a National Consultancy company that specialised in Environmental Legislation (Health and Safety, Quality Assurance, RMA, HR etc).

# JOINT VENTURES

---

## Waikato

Land Based Training Limited has become directly involved with the Piarere Agricultural Education Trust in Waikato. The Trust is a non-profit community trust set up to run the facility that used to be the Piarere Primary School (between Cambridge and Matamata). Paul Tidmarsh is allowing the Trust to use this for Agricultural Training.

The facility is being used four ways:

### 1. Fee Paying Courses

Piarere School of Agriculture. This is a full time course for sixth and seventh form students as a “pre-entry” into farming. Students graduate with a National Certificate in Agriculture (NCA) Level 2, which goes towards their NCA Level 4. The objective is to ensure graduates have some base skills before entering full time employment

### 2. TOP's Courses

TEC – Waikato is currently running a 44-week Dairy Course funded by TEC. This course is for youth and mature trainees with a general interest in Dairy farming.

### 3. Block Courses

These being held for those already in agriculture, these include motorbikes, chainsaws, ATV's, feed budgeting and mating management.

The aim is to provide useful up-skilling for employees in the local area.

### 4. Schools

A large number of the schools in the Waikato region are taught Agriculture Skills Programme.

These include fencing, ATV's, motorbikes, tractors, chainsaws and stock handling.

*Land Based Training Limited has become involved with this joint venture as the need for trained dairy farmers in the Waikato grows.*

## Construction

Land Based Training and Jeremy Palmer a registered NZCITO tutor to teach roading units have merged together to create Land Based Training Construction Limited.

This joint venture will provide Land Based Training with the necessary skills and knowledge to produce short courses for road users who work on the Transfunded roading network to comply with the new certifications which Transit New Zealand require before June 2001.

As well as these short courses Land Based Training have also been successful with the ESITO, NZCITO and NZQA to become accredited to teach the National Certificate in Civil Construction to the contractors. Accreditation has also been gained in the subfield Occupational Health and Safety from the NZITO and will be utilised in teaching Health and Safety in the workplace.

One large contracting firm in Palmerston has signed up and will be used as a model by the NZCITO for other properties.

Road safety is a subject that effects all road users from road controlling authorities and consultants to those who work and drive on our roads.

In January 2002 a TEC Contracting course began with a maximum of 9 trainees. This is a 40-week course offering the National Certificate in Civil Works.

## **Atihau/Morikau Incorporation**

The Atihau/Morikau Incorporation wishes to promote a Modern Apprenticeship plan that will introduce descendants of share holders to opportunities of working on the land, whilst gaining further training in agriculture, secure employment and experiencing the tikanga of their land.

Introductory courses have been set up so descendants can spend time on maraes in the local area, learn skills and be interviewed for employment opportunities that exist.

## **Nga Rauru Iwi Authority**

Maatauranga O Te Maara is a pilot training scheme run in conjunction with Local Level Solutions TEC and Land Based Training.

The horticultural course runs on the Wai O Tui marae, it is a first in the TEC central region.

Outcomes will be employment on the Marae, further training at UCOL and employment in local horticultural business.

## **WITT**

In 2003 Land Based Training Limited have joined with WITT (Western Institute of Technology at Taranaki)

Short courses will be on offer from Level 2 to Level 4 as well as the full Qualifications. Students will be able to enrol with WITT's under Land Based Training's policies and accreditation.

These courses will allow students to enrol on the full qualification or specialised courses such as ATV safety, stock handling, milk routines etc as required.

Course costs will be kept to a minimum.

## **LAND BASED TRAINING CONTACTS LIST – 2005**

---

### **OFFICE**

Rob Gollan	Manager/ Director	Hm: (06) 342 7886 Fax: (06) 348 9198	(06) 349 0077 021 431 173
Jeremy Higgle	Director		0274 535 824
Frances Barrie/ Sharon Campbell Christina Ivar	Office Administrators	Ph Fax Toll Free Email	(06) 349 0077 (06) 348 9198 0508 872 466 admin@landbased.net www.landbased.net
Wanganui Classroom			(06) 349 0077
Palmerston North Classroom			(06) 355 1070

---

### **CONSTRUCTION**

Jeremy Palmer	Tutor / Director		(06) 329 0000 021 528 266
Dick Vroombout	Field Officer		(06) 357 0024 0274 470 916
Wayne Aldridge	TEC Tutor		0274 848 665

---

### **TUTORS**

Derek Priest –Agriculture			027 239 3712
Patricia Avison –Employment Skills			027 441 4903
Ruth Short - Agriculture		Ph/fax	(06) 765 5469
Jason Richards – Agriculture / Horticulture		Ph/fax	(06) 844 5559 027 241 3591
David Severinsen - Agriculture		Fax Mobile	(06) 357 5558 (06) 357 5557 021 152 1839
Mike Hansen – Agriculture			(06) 755 1092
Chris Drake – Agriculture			(06) 762 3519
Richard Stratford - Agriculture			(06) 356 4781

## **FIELD OFFICERS**

### **Wanganui**

Alan Davis	Field Officer - Wanganui	ph	021 222 1272
Paul Smith	Field Officer – Wanganui	ph/fax	(06) 342 7855 0274 514 991
Brian Doughty	Field Officer - Wanganui fax (06) 342 1046		(06) 342 1846 025 857 903
Sarah Deroles	Field Officer – Te Ara Hou Fax (06) 342 1897		(06) 342 1891 027 326 7377

### **Manawatu / Rangitikei**

Tuki Te Reo	Field Officer - Farming	ph	(06) 355 5918 025 683 2613
Gerald White	Field Officer – Farming	ph/fax	(06) 323 8298 027 692 0409
Rod Thompson	Field Officer – Farming	ph fax	(06) 323 8660 (06) 323 8650 025 227 5023
Jo Hazlitt	Field Officer - Employment		(06) 325 8773 021 931 009

### **Ruapehu / Taumarunui**

Debbie Te Riaki	Administrator		(06) 385 8914
Hikoi Te Riaki	Field Officer		(06) 385 8914
Sally-Anne Downes	Training Co-ordinator (Taumarunui)		(07) 386 0959

### **Horowhenua**

Raewyn Stratton	Field Officer – Horowhenua		(06) 367 9974 0274 373 805
-----------------	----------------------------	--	-------------------------------

### **Hawkes Bay**

John Bird	Field Officer - Youth Fax (06) 858 9548		(06) 858 9546 0274 831 214
Marley Taukamo	Field Officer – Mature Fax (06) 856 6657		(06) 856 6658 021 210 1067

### **Central Taranaki**

Ngapari Nui	Field Officer – Maatauranga O Te Maara	(06) 273 8158 021 748 440
Ricky Tito	Field Officer / Tutor	(06) 272 2007
Richard Haycock	Field Officer	(06) 762 3811

### **New Plymouth Rural Industries**

Colin Ranford	Training Co-ordinator	(06) 765 8017 025 531 546
---------------	-----------------------	------------------------------

### **Waikato**

Direct phone / fax to LBT Waikato Office  
Room 1  
Community Health Centre  
22a Taylor Street  
CAMBRIDGE

(07) 823 5358

### **Nicky Inwood – Waikato Manager**

Cellphone: 0274 900 790

Email: [nicky.landbased@xtra.co.nz](mailto:nicky.landbased@xtra.co.nz)

### **Land Based Training Head Office Postal Address:**

**Freepost LBT, Land Based Training Limited P O Box 689, WANGANUI**

**HEAD OFFICE FREEPHONE: 0508 TRAIN ME (872 466)**

